



GAT MONTHLY MEMBERSHIP PROGRESS REPORT

Results as of: 6/30/2022

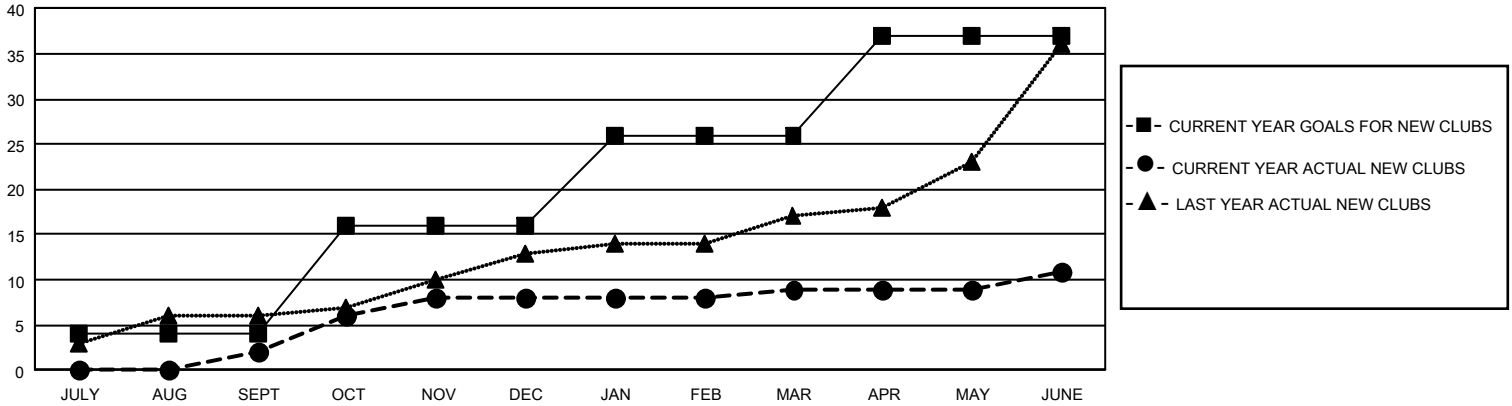
GAT Constitutional Area 2

REPORT DOES NOT INCLUDE CLUBS IN UNDISTRICTED AREAS.

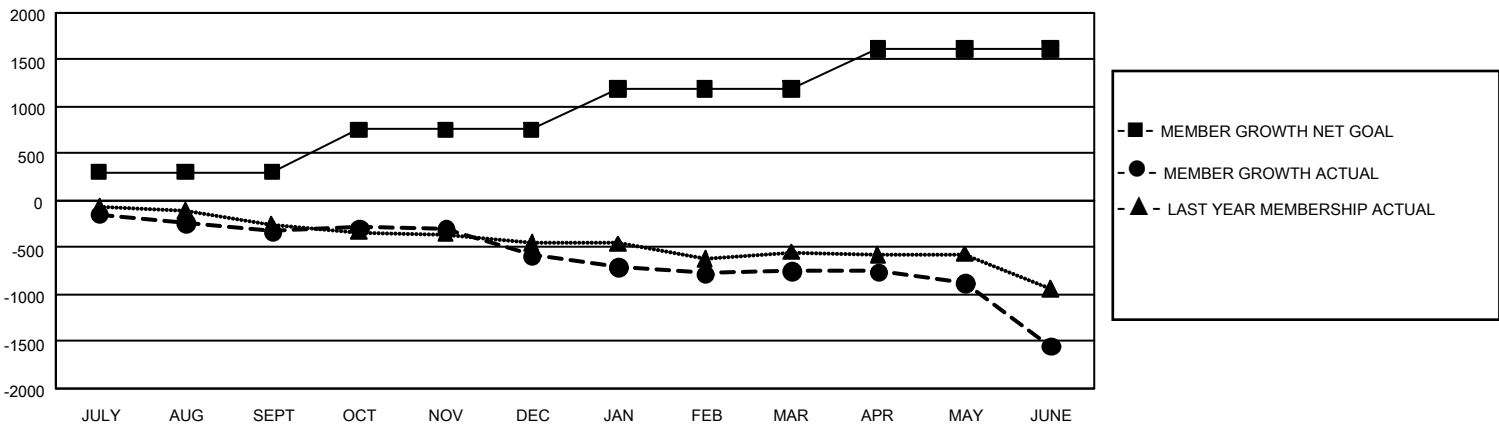
Clubs			
RESULTS FOR 2021-2022			
QUARTER	NEW CLUB GOAL	NEW CLUBS	DROPPED CLUBS
JULY/AUG/SEPT	12	2	9
OCT/NOV/DEC	36	6	13
JAN/FEB/MAR	30	1	9
APR/MAY/JUNE	33	2	18

Members			
RESULTS FOR 2021-2022			
QUARTER	MEMBER GROWTH NET GOAL	MEMBER GROWTH ACTUAL	DROPPED MEMBERS ACTUAL (including transfers)
JULY/AUG/SEPT	306	442	691
OCT/NOV/DEC	450	842	1,018
JAN/FEB/MAR	438	679	743
APR/MAY/JUNE	426	1,107	1,765

GOALS AND ACTUAL NEW CLUBS CUMULATIVE



GOALS AND ACTUAL MEMBERS CUMULATIVE



DROPPED CLUBS: 49	
DROPPED MEMBERS	
DECEASED	487
CLUB CANCELLED	348
OTHER	3,383
TOTAL	4,218

701 CLUBS OF 1,289 ADDED 1 OR MORE NEW MEMBERS

[CLICK HERE FOR CUMULATIVE MEMBERSHIP DATA](#)

GENDER DISTRIBUTION	
MALE	17,670 (66.00%)
FEMALE	9,101 (33.99%)
NON BINARY	1 (0.00%)
PREFER NOT TO ANSWER	1 (0.00%)
TOTAL FAMILY UNIT MEMBERS	4,767
FAMILY MEMBERS PAYING HALF DUES	2,447